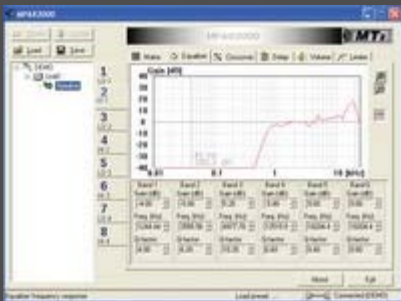




MTI PA FORSTERKERE

MTI MPA 82000



The MTI MPA 82000

is a compact 19", high power amplifier with a built in eight channel DSP controller.

This unique product is the result of many years of research and development. The design is the result of increasing demands highly influenced by the professional end users. The heavy duty chassis is designed for a "life on the road".

MPA82000 replaces a typical 12 - 16 unit amplifier system, including controller, line connector panel and speaker connector panel.

MTI has invested more than three decades of experience in designing professional audio systems in this extremely sophisticated construction, resulting in considerable advances over traditional amplifier design. All circuit designs are based on extremely reliable and sophisticated technology, insuring stability into "difficult" loads.

Key features:

- Up to 8 x 500 or 1000W modules in any combination.
- Standard configuration is 4 x 500 Watt and 4 x 1000 Watt modules. 1000 watt modules are bandwidth limited @ 3kHz -1dB. Other configurations on request.
- DSP with full 8 x 8 matrix, EQ, Crossover, Delay, Volume, Limiter.
- Global delay up to 1,6 sec.
- 16 presets available.
- RS485 interface for controlling up to 16 amplifiers by one PC, up to 4000 ft/1200 m.
- Line connector panel.
- Speaker connector panel.
- 3 Unit high.
- 26 kg

Specifications:

Dimensions: 483 x 133 x 620 mm

Rear panel:

- Main power
- Air flow output
- Main fuse

Front panel:

- Standby/On switch
- Air flow input
- Balanced line input
- Speakon output
- Remote IN/OUT

Panel functions:

- 8 x Signal indicator
- 8 x Fault indicator
- 8 x Limiter indicator
- 8 x Character alpha numeric info display

| Watt | Load Ohms | Watt RMS | Watt RMS Total |
|------|-----------|-----------|----------------|
| 500 | 8 | 250 x 8 | 2000 |
| 500 | 4 | 500 x 8 | 4000 |
| 500 | 2 | 1000* x 8 | 8000* |
| 1000 | 8 | 500 x 8 | 4000 |
| 1000 | 4 | 1000 x 8 | 8000 |
| 1000 | 2 | 2000* x 8 | 16000* |

*) Burst power

- Ultralow distortion: THD+N < 0.05%, 0.1W - 500W, 10 Hz - 20 kHz, 4 ohms
- Wide dynamic range: 119 dB
- Damping factor: > 800
- Power Supply Rejection Ratio: > 60 dB

MTI H3000



The MTI H3000

amplifiers take advantage of the very latest MOS-FET technology to give a no compromise blend of the highest Sonic Quality, Reliability and Power, and is a perfect match if you want to use the MTI BR series loudspeakers in passive mode.

This in a compact and robust 2U case.

Output per Channel:

4 Ohms: 1500 Watts

8 Ohms: 1000 Watts

Bridged 8 Ohms: 3000 Watts

Technical Data:

Frequency response: 10Hz - 25Khz

Signal to Noise Ratio: 100db

Slew Rate: 50v/us

Damping Factor: >300

THD @ Rated Power: 0.06% over rated bandwidth - 1Khz typically 0.03%

Dimensions: 483 x 88 x 320 mm

Features:

- Soft start circuit (Inrush Protection).Protection against Short Circuit and Overheating.
- Speaker protection relay with delay to inhibit switch on thump. (Speakers are disconnected during power up/down).
- Twin variable speed fan cooling, drawing in clean air through the front panel.
- All input and links are balanced.
- Stereo, Mono and Bridged Mono switch on rear panel, with full status on front panel.
- Switchable Active Clip Limiter.
- Illuminated Power Switch & Volume Control Knobs.
- Indicators for Mono & Bridge mode, Peak Signal, LED

Output Level Meter, Protect Mode.

- Mono/Stereo Jack & XLR Signal In.
 - Speakon outputs to A & B Channels.
 - XLR Line out.
 - Mains Powercon.
 - Internal Input Sensitivity Switch (Switchable between 0.775v and 1.2v).
 - CLASS H Technology
-